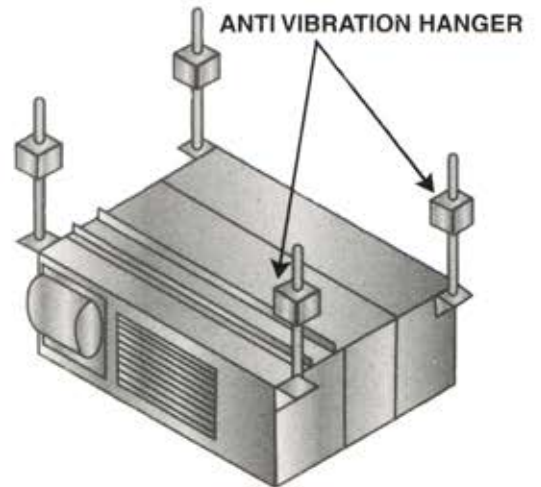
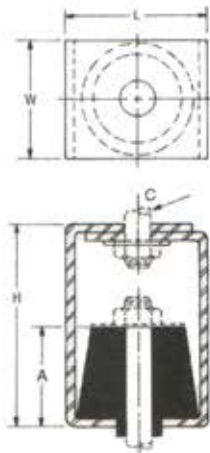


RESILIENT HANGER

USE WITH MOUNTING RAILS

Rigid Resilient Hanger consist of a resilient rubber mount held between two zinc plated steel caps for uniform distribution of load.

It has an integral extended rubber sleeve which prevents direct metal to metal contact, thereby minimizing transmission of noise and vibration.

ANTI VIBRATION HANGER


Anti Vibration Hanger consist of steel housing and isolation element having high load bearing capacity.

Model	Description	Dimensions (mm)					Load Bearing Capacity Point load (kgs)
		L	W	H	A	C	
RAVH	Antivibration Hanger	50	50	65	30	10	80