

Curtain Fire Damper out of Air Stream

Application

CFDO Curtain type fire damper model is suitable for use in walls, floors and partitions.

Construction

Frame

Galvanised steel 18gauge (1.2 mm thick)

Blades

22 gauge Galvanised steel curtain type outside air stream

Closure springs

Constant force spring made of SS

Fusible link

UL listed 165°F(72°C) temperature rated

Mounting

Vertical or horizontal

Minimum size

100mm x 100mm

Maximum size

1000mm x 1000mm single section

Multiple sections can be assembled as per the customer's site conditions.

Any other specification may be manufactured as per the customer's request.

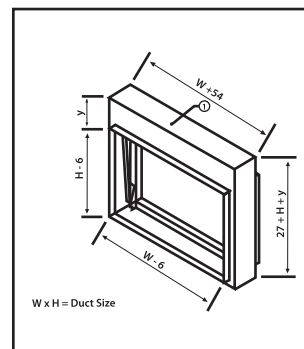


Fig. 2.2

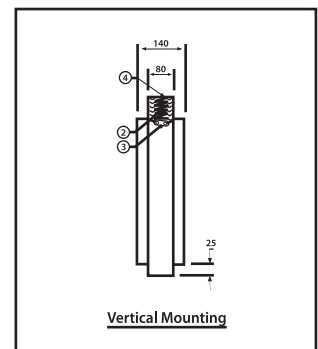


Fig. 2.3

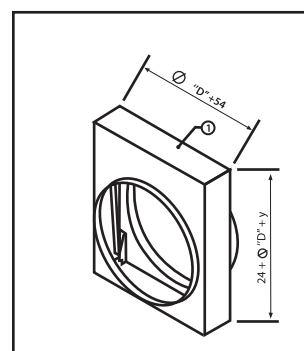


Fig. 2.4

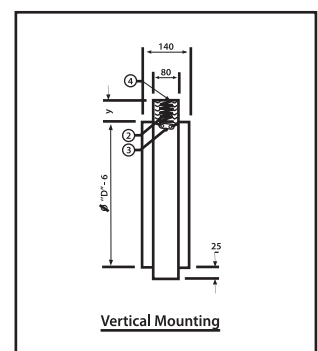


Fig. 2.5

Curtain Fire Damper in Air Stream

Application

CFDI curtain type fire damper model is suitable for use in walls, floors and partitions.

Construction

Frame

Galvanised steel 18 gauge (1.2 mm thick)

Blades

22 gauge Galvanised steel curtain type in the air stream

Closure springs

Constant force spring made of SS 301/304

Fusible link

U L listed 165°F(72°C) temperature rated

Mounting

Vertical or horizontal

Minimum size

100mm x 100mm

Maximum size

1000mm x 1000mm single section

Multiple sections can be assembled as per the customer's site conditions.

Any other specification may be manufactured as per the customer's request.

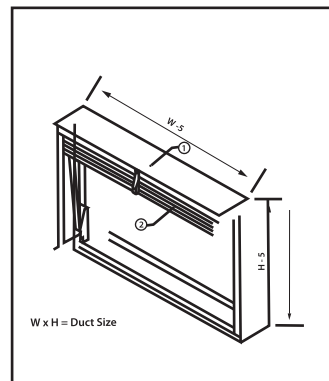


Fig. 2.6

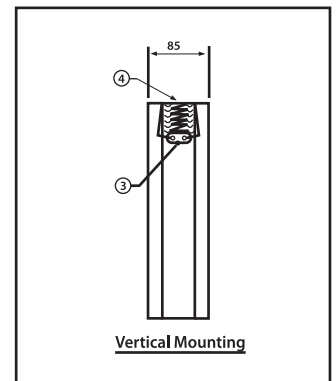


Fig. 2.7

Motorised Fire Damper - MFD

Construction

Frame (Spigot case)

Galvanised steel 18 gauge

Blades

16 gauge Galvanised steel V formed

Thermal Trip

Thermal Trip activates at 165° F

Sleeves

Rectangular

Control Shaft

12mm diameter zinc coated steel

Bearings

SS / PB bearings suitable for temperature resistance upto 200°C

Linkage

20mm width x 3mm thick zinc coated steel

Actuator

Electric spring return 230v a.c or 24v d.c

Side Seals

Stainless steel 0.7mm thick

Minimum size

200mm x 200mm

Maximum size

1000mm x 1000mm single section

Multiple sections can be assembled as per the customer's site conditions.

Any other specification may be manufactured as per the customer's request.

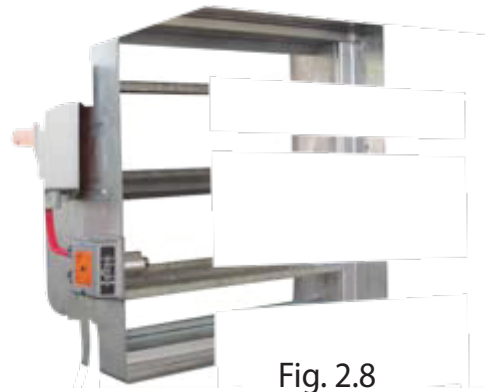


Fig. 2.8



Fig. 2.9

Motorised Smoke Damper - MSD

Construction

Frame (Spigot case)

Galvanised steel 18 gauge

Blades

16 gauge Galvanised steel V formed

Blades seals

Silicon Rubber laminated acrylic adhesive
hardness 60-65. Permanently bonded to blade.

Thermal Trip

Thermal Trip activates at 165° F

Sleeves

Rectangular

Control shaft

12mm diameter zinc coated steel

Bearings

SS / PB bearings suitable for temperature resistance upto 200°C

Linkage

20mm width x 3mm thick zinc coated steel

Actuator

Electric spring return 230v a.c or 24v d.c

Side Seals

Stainless steel 0.7mm thick

Minimum size

200mm x 200mm

Maximum size

1000mm x 1000mm single section

Multiple sections can be assembled as per the customer's site conditions.

Any other specification may be manufactured as per the customer's request.



Fig. 2.10